

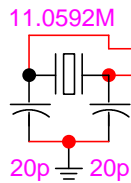
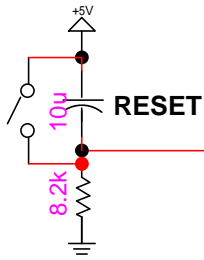
8051 in circuit debugger based on AT89C51
Chin-Shiuh Shieh 1999/11/21

AT89C51

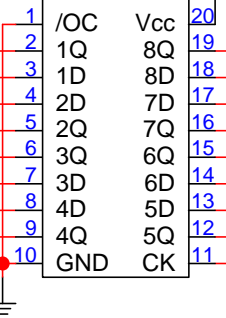
1	P1.0	VCC	40
2	P1.1	P0.0(AD0)	39
3	P1.2	P0.1(AD1)	38
4	P1.3	P0.2(AD2)	37
5	P1.4	P0.3(AD3)	36
6	P1.5	P0.4(AD4)	35
7	P1.6	P0.5(AD5)	34
8	P1.7	P0.6(AD6)	33
9	RST	P0.7(AD7)	32
10	P3.0(RXD)	/EA(VPP)	31
11	P3.1(TXD)	DALE(/PROG)	30
12	P3.2(/INT0)	/PSEN	29
13	P3.3(/INT1)	P2.7(A15)	28
14	P3.4(T0)	P2.6(A14)	27
15	P3.5(T1)	P2.5(A13)	26
16	P3.6(/WR)	P2.4(A12)	25
17	P3.7(/RD)	P2.3(A11)	24
18	XTAL2	P2.2(A10)	23
19	XTAL1	P2.1(A9)	22
20	GND	P2.0(A8)	21

In Circuit Socket

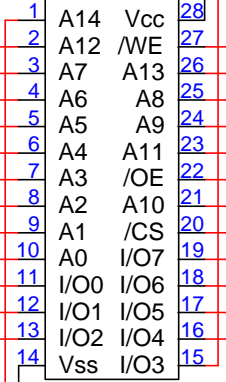
1	P1.0	VCC	40
2	P1.1	P0.0(AD0)	39
3	P1.2	P0.1(AD1)	38
4	P1.3	P0.2(AD2)	37
5	P1.4	P0.3(AD3)	36
6	P1.5	P0.4(AD4)	35
7	P1.6	P0.5(AD5)	34
8	P1.7	P0.6(AD6)	33
9	RST	P0.7(AD7)	32
10	P3.0(RXD)	/EA(VPP)	31
11	P3.1(TXD)	DALE(/PROG)	30
12	P3.2(/INT0)	/PSEN	29
13	P3.3(/INT1)	P2.7(A15)	28
14	P3.4(T0)	P2.6(A14)	27
15	P3.5(T1)	P2.5(A13)	26
16	P3.6(/WR)	P2.4(A12)	25
17	P3.7(/RD)	P2.3(A11)	24
18	XTAL2	P2.2(A10)	23
19	XTAL1	P2.1(A9)	22
20	GND	P2.0(A8)	21



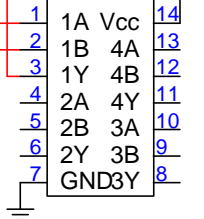
74373



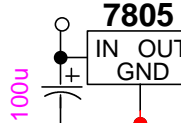
62256



7408 AND

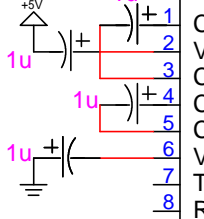


Vin > 7V DC Vout = 5V DC



Power Link

HIN232



RS232 Connector

