

***The Sixth International Conference on Genetic and Evolutionary
Computing***

August 25-28, 2012, Kitakyushu, Japan

<http://bit.kuas.edu.tw/~icgec12>

Kitakyushu International Conference Center

<http://www.convention-a.jp>

Conference Program Book



IEEE



Supported by

International Society of Management Engineers

Kitakyushu City

West Japan Industry and Trade Convention Association

Organizing Committee

Conference Chairs:

Junzo Watada,	Waseda University,	Japan
Pau-Choo Chung,	National Cheng Kong University,	Taiwan

Honorary Chairs:

Takeshi Yamakawa	Kyushu Institute of Technology,	Japan
Bin-Yih Liao,	Kaohsiung University of Applied Sciences,	Taiwan
Jar-Ferr Yang,	National Cheng-Kung University,	Taiwan
Kotaro Hirasawa,	Waseda University,	Japan
Lakhmi C. Jain,	University of South Australia,	Austraria

Advisory Chair:

Jeng-Shyang Pan,	Kaohsiung University of Applied Sciences,	Taiwan
Hisao Ishibuchi,	Osaka Prefecture University,	Japan
Hideyuki Takagi,	Kyushu University,	Japan
Ajith Abraham,	Norwegian University of Science and Technology,	Norway

International Program Committee:

Hisashi Handa,	Okayama University,	Japan
Kengo Katayama,	Okayama University of Science,	Japan
Hiroyuki Sato,	The University of Electro-Communications,	Japan
Yan Shi,	Tokai University,	Japan
Tzung-Pei Hong,	National University of Kaohsiung,	Taiwan

Program Committee Chairs:

Isao Hayashi,	Kansai University,	Japan
Chin-Shiuh Shieh,	Kaohsiung University of Applied Sciences,	Taiwan
Shigeyoshi Tsutsui,	Hannan University,	Japan
Jinglu Hu,	Waseda University,	Japan

Invited Session Chair:

Hirosato Seki,	Osaka Insittute of Technology,	Japan
Keiichi Horio,	Kyushu Institute of Technology,	Japan
Chin-Feng Lee,	Chaoyang University of Technology,	Taiwan

Organizing Committee Chair:

Hidetoshi Yoshimura,	Kitakyushu University,	Japan
----------------------	------------------------	-------

Publication Chair:

Mong-Fong Horng,	National Kaohsiung University of Applied Sciences,	Taiwan
Hsiang-Cheh Huang,	National University of Kaohsiung,	Taiwan

Preface

Dear Contributing Authors,

We are grateful to your participation in the event.

There were a vast number of papers from related fields being submitted to ICGEC-2012. However, due to the space limitation imposed by the agreement with the publisher, the Conference Publishing Services of the IEEE Computer Society, only a limited number of papers can be included in the conference proceedings. According to the reports from anonymous reviewers, the accepted papers are included in the invited sessions, general sessions and the poster session as shown in the program.

We regret that we are unable to include all those distinguished works intended to ICGEC-2012.

Here we would like to express our appreciation to all your contribution and look forward to meeting all of you in the conference venue.

Please feel free to let us know (icgec12@bit.kuas.edu.tw) for any requests form yours to assist you in future.

Finally we would like to express our appreciation to all your contribution, and look forward to meeting you all in Kitakyushu this August.

Sincerely Yours,

Chin-Shiuh Shieh, Program Committee Chair
National Kaohsiung University of Applied Sciences, Taiwan

Junzo Watada, Conference Chair

Waseda University, Japan

The Sixth International Conference on Genetic and Evolutionary Computing

E-mail: icgec12@bit.kuas.edu.tw, URL: <http://bit.kuas.edu.tw/~icgec12>

Keynote Speech (1)



**Valentina Emilia Balas
(Aurel Vlaicu University)**

Topic :

Advanced Intelligent Computing Methodologies and Applications

9:10 - 10:10 August 26 (room I)

Short Biography :

Valentina E. Balas is currently an Associate Professor in the Department of Automatics and Applied Software at the Faculty of Engineering, University "Aurel Vlaicu" Arad (Romania). She holds a Ph.D. in Applied Electronics and Telecommunications from Polytechnic University of Timisoara. She is author of more than 140 research papers in refereed journals and International Conferences. Her research interests are in Intelligent Systems, Fuzzy Control, Soft Computing, Smart Sensors, Information Fusion, Modeling and Simulation.

She is the Editor-in Chief of International Journal of Advanced Intelligence Paradigms (IJAIP), member in Editorial Board member of several national and international journals and is an evaluator expert for national and international projects.

Dr. Balas participated in many international conferences as General Chair, Organizer, Session Chair and member in International Program Committees.

She was a mentor for many student teams in Microsoft (Imagine Cup), Google and IEEE competitions in the last years.

She is a member of EUSFLAT, ACM and a Senior Member of IEEE, member in TC – Fuzzy Systems (IEEE CIS), member in TC - Emergent Technologies (IEEE CIS), member in TC – Soft Computing (IEEE SMCS) and also a member of IFAC - TC 3.2 Computational Intelligence in Control.

Keynote Speech (2)



Professor Han-Chieh Chao (National Ilan University)

Topic :

Evolutionary Computation for Future Internet: Internet of Things

9:10 - 10:10 August 27 (room I)

Short Biography :

Han-Chieh Chao is a joint appointed Full Professor of the Department of Electronic Engineering and Institute of Computer Science & Information Engineering of National Ilan University, I-Lan, Taiwan, R.O.C. where he is also serving as the president.

He was appointed as the Director of the Computer Center for Ministry of Education starting from September 2008 to July 2010. His research interests include High Speed Networks, Wireless Networks, IPv6 based Networks, Digital Creative Arts and Digital Divide. He received his MS and Ph.D. degrees in Electrical Engineering from Purdue University in 1989 and 1993 respectively. He has authored or co-authored 4 books and has published about 280 refereed professional research papers. He has completed 100 MSEE thesis students and 3 PhD students.

Dr. Chao has received many research awards, including Purdue University SRC awards, and NSC research awards (National Science Council of Taiwan). He also received many funded research grants from NSC, Ministry of Education (MOE), RDEC, Industrial Technology of Research Institute, Institute of Information Industry and FarEasTone Telecommunications Lab. Dr. Chao is the Editor-in-Chief for IET Communications, Journal of Internet Technology, International Journal of Internet Protocol Technology and International Journal of Ad Hoc and Ubiquitous Computing. Dr. Chao has served as the guest editors for Mobile Networking and Applications (ACM MONET), IEEE JSAC, IEEE Communications Magazine, Computer Communications, IEE Proceedings Communications, the Computer Journal, Telecommunication Systems, Wireless Personal Communications, and Wireless Communications & Mobile Computing. Dr. Chao is an IEEE senior member and a Fellow of IET (IEE). He is a Chartered Fellow of British Computer Society.

Keynote Speech (3)



Professor Hisao Ishibuchi (Osaka Prefecture University)

Topic : Hot Issues in Evolutionary Many-Objective Optimization

9:10 - 10:10 August 28 (room I)

Short Biography :

Prof. Hisao Ishibuchi received the BS and MS degrees from Kyoto University in 1985 and 1987, respectively. He received the Ph. D. degree from Osaka Prefecture University in 1992. Since 1987, he has been with Osaka Prefecture University as a research associate (1987-1993), an assistant professor (1993), an associate professor (1994-1999) and a professor since 1999.

His research interests include evolutionary multiobjective optimization, fuzzy rule-based systems and evolutionary games. He received a Best Paper Award from GECCO 2004, HIS-NCEI 2006, FUZZ-IEEE 2009, WAC 2010, SCIS & ISIS 2010 and FUZZ-IEEE 2011. He also received a 2007 JSPS Prize from the Japan Society for the Promotion of Science.

He is the IEEE CIS Vice-President for Technical Activities (2010-2011 & 2012-2013), the Program Chair of IEEE CEC 2010, a Program Co-Chair of FUZZ-IEEE 2011, the General Chair of ICMLA 2011, a Technical Co-Chair of FUZZ-IEEE 2012 and SEAL 2012, and a Program Co-Chair of FUZZ-IEEE 2013. He is also an associate editor of IEEE T-SMC Part B (2002-), IEEE TFS (2004-), IEEE CI Magazine (2005-) and IEEE TEC (2007-). According to Web of Knowledge (Thomson Reuters), the total number of citations of his papers is about 4000.

6th International Conference on Genetic and Evolutionary Computation

August 24	
08:00	Departure at 2F of Rihga Royal Hotel at 8:00 am
08:00 - 19:00	One day tour (10,000JPY)

August 25	
16:00 - 17:30	Registration CONVENTION HALL 2F
at 16:00 & at 18:00	Departure in front of Convention Hall at 16:00 and at 18:00
19:00 - 21:00	Welcome Party at Mojiko Hotel

August 26			
8:00 - 18:00	Registration CONVENTION HALL 2F		
9:00 - 9:10	Opening		
9:10 - 10:10	KEYNOTE Room I	"Advanced Intelligent Computing Methodologies and Applications" by Valentina Emilia Balas (Aurel Vlaicu University)	
10:10 - 10:30		Coffee Break	
Room A		Room B	Room C
10:30 - 12:20	SA01: "Innovative Intelligent Multimedia Computing" Chaired by Chi-Shiang Chan, Chih-Yang Li.	SB02: "Evolutionary Computation in Vision, Image, and Signal Processing" Chaired by Chih-Hung Wu,	SC03: "Medical Physics, Medical Informatics, Medical Electronics" Chaired by Tsair-Fwu Lee, Hung-Yu Wang, Wei-Chun Lin.
12:20 - 13:50		Lunch at Framingo Café	
13:50 - 15:50	SA04: "Artificial Intelligence Applications for E-services (AIAE-2012) (I)" Chaired by Chen-Shu Wang, Wen-Chih Chang.	SB05: "Multimedia and Cloud Computing Security" Chaired by Zhiyong Zhang, Jian Wang,	SC06: "Advances in Information Security (I)" Chaired by Ya-Fen Chang, Jen-Ho Yang.
15:50 - 16:10		Coffee Break	
16:10 - 18:00	SA07: "Artificial Intelligence Applications for E-services (AIAE-2012) (II)" Chaired by Chen-Shu Wang, Wen-Chih Chang.	SB08: "Hybrid Evolutionary Algorithms in Forecasting Models" Chaired by Wei-Chiang Hong,	SC09: "Advances in Information Security (II)" Chaired by Ya-Fen Chang, Jen-Ho Yang.

August 27			
8:00 - 18:00	Registration CONVENTION HALL 2F		
9:10 - 10:10	KEYNOTE Room I	"Evolutionary Computation for Future Internet: Internet of Things" by Professor Han-Chieh Chao (National Ilan University)	
10:10 - 10:30		Coffee Break	
Room A		Room B	Room C
10:30 - 12:20	MA01: "Ubiquitous Biomedical Systems and Applications" Chaired by Chin-Hsien Wu, Zeng-Wei Hong, Yen-Lin Chen	MB02: "Innovative Mobile Services" Chaired by Chien-Chang Hsu, Hsing Mei,	MC03: "High Speed Computation and Applications in Information Security Systems" Chaired by Jim-Min Lin
12:20 - 13:50		Lunch at Framingo Café	
13:50 - 15:50	MA04: "Innovation in Computer Networking (I)" Chaired by Yuh-Chung Lin, Chen-Da Tsai,	MB05: "Intelligent Computing and Its Applications in Multimedia (I)" Chaired by Chia-Chen Lin,	MC06: "Evolutionary and Intelligent Computing in Social Networks" Chaired by Guiran Chang,
15:50 - 16:10		Coffee Break	
16:10 - 18:00	MA07: "Innovation in Computer Networking (II)" Chaired by Shih-Pang Tseng, Yuh-Chung Lin,	MB08: "Intelligent Computing and Its Applications in Multimedia (II)" Chaired by Chia-Chen Lin,	MC09: "Intelligent Applications for Home and Medical Treatment" Chaired by Nai-Bin Hsu, Jen-Chu Liu,
18:00 - 19:00		Moving to the banquet place	
19:00 - 21:00	Banquet at Rihga Top at Rihga Royal Hotel		

August 28			
8:00 - 18:00	Registration CONVENTION HALL 2F		
9:10 - 10:10	KEYNOTE Room I	"Hot Issues in Evolutionary Many-Objective Optimization" by Prof. Dr. Professor Hisao Ishibuchi (Osaka Prefecture University)	
10:10 - 10:30		Coffee Break	
	Room A	Room B	Room C
10:30 - 12:20	TA01: "Multimedia Innovative Computing" Chaired by Wu-Chih Hu, Deng-Yuan Huang,	TB02: "Intelligent Video Processing" Chaired by Chao-Ho Chen, Chien-Chuan Ko,	TC03: "Security Techniques and Applications" Chaired by Mu-Liang Wang, Yi-Jen Su,
12:20 - 13:50		Lunch at Framingo Café	
13:50 - 15:50	TA04: "Integrated Systems Engineering" Chaired by Jiann-Gwo Doong,	TB05: "Innovative Computing and Its Applications" Chaired by Huey-Ming Lee, Lily Lin, Jin-Shieh Su	TCP01: Poster Session
15:50 - 16:10		Coffee Break	
16:10 - 16:30	Closing		

Program (Detail)

SA01 (ICGEC-2012-IS02)

Innovative Intelligent Multimedia Computing

Chaired by Chi-Shiang Chan, Chih-Yang Li,

SA01-01 (ICGEC-2012-IS02-01)

Target-preserving Content-aware Image Resizing
Cheng-Hung Chuang, Zhong-Yan Shi

SA01-02 (ICGEC-2012-IS02-02)

Improved Reversible Data Hiding Based on Residue Histogram Shifting
Wen-Chuan Wu, Yu-Chieh Wu

SA01-03 (ICGEC-2012-IS02-03)

Joint Fingerprinting and Decryption for VQ Images through Bipartite Matching
Panyaporn Prangjarote, Chih-Yang Lin, Li-Wei Kang, Chia-Hung Yeh

SA01-04 (ICGEC-2012-IS02-04)

Analyze the Digital Watermarking Security Demands for the Facebook Website
Wei-Fan Hsieh, Pei-Yu Lin

SA01-05 (ICGEC-2012-IS02-05)

Extraction and Analysis of Structural Features of Lateral Ventricle in Brain Medical Images
Hui-Fuang Ng, Cheng-Hung Chuang, Chih-Hsueh Hsu

SA01-06 (ICGEC-2012-IS02-06)

An Image Hiding Method by Linking Multiple Pixels with XOR Operator
Chiao-Chih Huang, Yi-Hui Chen, Yuan-Yu Tsai, Chi-Shiang Chan

SB02 (ICGEC-2012-IS20)

Evolutionary Computation in Vision, Image, and Signal Processing

Chaired by Chih-Hung Wu,

SB02-01 (ICGEC-2012-IS20-01)

Evolvable Hardware Image Filters with Discriminations of Noise Patterns
Chih-Hung Wu, Chien-Jung Chen, Wei-Chih Yeh

SB02-02 (ICGEC-2012-IS20-02)

Image Watermarking Scheme Using Genetic Algorithm
Chih-Chin Lai, Chih-Hsiang Yeh, Chung-Hung Ko, Chin-Yuan Chiang

SB02-03 (ICGEC-2012-IS20-03)

A Robust Texture-based Background Subtraction Algorithm for Moving Object Detection in Video Sequences
Chen-Sen Ouyang, Ping-Wei Chen

SB02-04 (ICGEC-2012-IS20-04)

Robust Image Watermarking Based on Coevolutionary Genetic Algorithm
Yueh-Hong Chen, Hsiang-Cheh Huang

SB02-05 (ICGEC-2012-IS20-05)

An Empirical Study on Fuzzy Image Clustering with Various Clustering Validity Indexes
Chih-Hung Wu, Li-Wen Chen, Li-Wei Lu

SB02-06 (ICGEC-2012-IS20-06)

Vision-based Coordinate Transformation with Back Propagation Neural Networks on Mobile Robots
Chiung-Hui Tsai, Chih-Hung Wu, You-Dong Huang

SC03 (ICGEC-2012-IS09)

Medical Physics, Medical Informatics, Medical Electronics

Chaired by Tsair-Fwu Lee, Hung-Yu Wang, Wei-Chun Lin,

SC03-01 (ICGEC-2012-IS09-01)

The Application of Bioimpedance Method for Foot Sole Blood Perfusion Characterization

Kuo-Sheng Cheng, Yen-Fen Ko, Ting Wang

SC03-02 (ICGEC-2012-IS09-02)

Fractal Dimension Characteristic Analysis for Dose Verification in Intensity Modulation Radiation Therapy

Jia-Ming Wu, Tsair-Fwu Lee, Ching-Jiang Chen, Chung-Ming Kuo, Shyh-An Yeh

SC03-03 (ICGEC-2012-IS09-03)

Using Kalman filter with Morphological Image Operation Tracking a Moving Target in Radiotherapy

Jen-Hong Lan, Luke K. Wang, Ssu-Wei Chen, Shih-Yao Lin, Tsair-Fwu Lee

SC03-04 (ICGEC-2012-IS09-04)

Analysis of Vibroarthrographic Signals for Knee Osteoarthritis Diagnosis

Tsair-Fwu Lee, Li-Fu Wu, Hung-Yu Wang, Wei-Chun Lin

SC03-05 (ICGEC-2012-IS09-05)

Evaluation of the Opposition Ability for Hand Intrinsic Damage using a Simple Self-constructing Electromyography

Chi-Heng Lu, Tsair-Fwu Lee, Szi-Wen Chen, Shih-Yao Lin, Chiu-Ching Tuan

SC03-06 (ICGEC-2012-IS09-06)

Symbolic Small-Signal Analysis of Various Amplifiers

Hung-Yu Wang, Tsair-Fwu Lee, Cing-Wen Yang, Edward Soto, Wei-Chun Lin, Shun-Hsyung Chang

SA04 (ICGEC-2012-WS01-I)

Artificial Intelligence Applications for E-services (AIAE-2012) (I)

Chaired by Chen-Shu Wang, Wen-Chih Chang,

SA04-01 (ICGEC-2012-WS01-01)

Development of Context Awareness Learning System for Elementary Chinese Language Learning

David Tawei Ku, Chia-Chi Chang

SA04-02 (ICGEC-2012-WS01-02)

The Optimal Deployment of Wi-Fi Wireless Access Points Using the Genetic Algorithm

Chen-Shu Wang, Li-Fang Kao

SA04-03 (ICGEC-2012-WS01-03)

Base station deployment with capacity and coverage in WCDMA systems using genetic algorithm at different height

Chen-Shu Wang, Yi-Dung Chen

SA04-04 (ICGEC-2012-WS01-04)

Activities and Event-Driven-Based Role Engineering

Mei-Yu Wu

SA04-05 (ICGEC-2012-WS01-05)

An Adaptive e-Service for Bridging the Cloud Services

Chih-Kun Ke, Shih-Fang Chang, Zheng-Hua Lin

SA04-06 (ICGEC-2012-WS01-06)

Network-enabled Knowledge Discovery Service Design-Medical Online Texts

Wei-Feng Tung, Wen-Kai Liu

SA04-07 (ICGEC-2012-IS07-05)

Two Phased Decompression Scheme for Quality Improvement of Vector Quantized Images

Chun-Hsiu Yeh, Jinn-Ke Jan, Jau-Ji Shen

SB05 (ICGEC-2012-IS01)

Multimedia and Cloud Computing Security

Chaired by Zhiyong Zhang, Jian Wang,

SB05-01 (ICGEC-2012-IS01-01)

Stereo Matching with Semi-Limited Belief Propagation

Chengzhi Luo, Jianjun Lei, Guanglong Hu, Kefeng Fan, Shupo Bu

SB05-02 (ICGEC-2012-IS01-02)

A Testing Method for the Image Crosstalk of Stereoscopic Television

Kefeng Fan, Jianjun Lei, Guanglong Hu, Shupo Bu

SB05-03 (ICGEC-2012-IS01-03)

Advance on Trust Model and Evaluation Method in Social Networks

Lijun Yang, Zhiyong Zhang, Weili Tian, Qingli Chen

SB05-04 (CGEC-2012-0246)

Differential Evolution with Graph-Based Speciation by Competitive Hebbian Rules

Tetsuyuki Takahama, Setsuko Sakai

SB05-05 (ICGEC-2012-0317)

Printable Optical Logic Gates with CIELAB Color Coding System for Boolean Operation-Mediated Handling of Colors

Tomonori Kawano

SB05-06 (ICGEC-2012-0333)

Application of Belief Learning Model based Socio-Rational Secret Sharing Scheme on Cloud Storage

Tao Zheng, Haitong Wu, Hao Wen Lin, Jeng-Shyang Pan

SB05-07 (ICGEC-2012-IS17-01)

Applying Feature Selection Combination-based Rough Set Classifiers to Forecast Credit Rating Status

[You-Shyang Chen](#), [Ching-Hsue Cheng](#), [Da-Ren Chen](#), [Wei-Yu Chen](#)

SC06 (ICGEC-2012-IS03-I)

Advances in Information Security (I)

Chaired by Ya-Fen Chang, Jen-Ho Yang,

SC06-01 (ICGEC-2012-IS03-01)

An Information Hiding Method Based on Grouping Color Palette Indices by K-means Clustering and Similar Pairs

Chyuan-Huei Thomas Yang, Yu-Wei Hsu, Che-Lun Chung

SC06-02 (ICGEC-2012-IS03-02)

The Study of Automate Locate Special Fiducial Marks

Yu-Ching Lin, Yu-Ying Chiu, Hau-Wei Le, Bo-Yan Jhan, Chuen-Horng Lin

SC06-03 (ICGEC-2012-IS03-03)

Enhancement of Dynamic ID Based User Authentication for Multi-Server Environment

Hui-Feng Huang, Pin-Han Lin

SC06-04 (ICGEC-2012-IS03-04)

Comments on a Dynamic-ID-based Remote User Authentication Scheme for Multi-server Environment Using Smart Cards

Ya-Fen Chang, Pei-Yu Chang

SC06-05 (ICGEC-2012-IS03-05)

An Efficient and Flexible Mobile Payment Protocol

Chin-Chen Chang, Jen-Ho Yang, Kai-Jie Chang

SC06-06 (ICGEC-2012-IS03-06)

Payment Status and Service Level Agreement Based Access Control Method in Cloud Service Business
Chi-Lun Liu

SC06-07 (ICGEC-2012-IS07-09)

A Robust Information Hiding Scheme with Range Coding on Color-Image
Yung-Chen Chou, Chih-Chao Wang, Jau-Ji Shen

SA07 (ICGEC-2012-WS01-II)

Artificial Intelligence Applications for E-services (AIAE-2012) (II)

Chaired by Chen-Shu Wang, Wen-Chih Chang,

SA07-01 (ICGEC-2012-WS01-08)

Combining Fuzzy AHP and Association Rule to Evaluate the Activity Processes of e-Learning System
Chen-Shu Wang, Shiang-Lin Lin

SA07-02 (ICGEC-2012-WS01-09)

Handover Strategy in HIP-based LTE Femtocells Networks with Hybrid Access Mode
Shih-Jung Wu

SA07-03 (ICGEC-2012-WS01-10)

Enhancing Sales Forecasting by using Neuro Networks and the Popularity of Magazine Article Titles
Hani A. Omar, Duen-Ren Liu

SA07-04 (ICGEC-2012-WS01-12)

The Antecedents of Reflection in Online Learning Environments by using a Social Network Perspective
Hsiu-Hua Cheng, Ju-Chun Lin

SA07-05 (ICGEC-2012-WS01-14)

Development of a Multiplayer Online Game-based learning System Based on ARCS Motivation Model
Ming-Hsiung Ying, Kai-Ting Yang, Guang-Hong Deng

SA07-06 (ICGEC-2012-0343)

A Wireless Sensor Network Topology Design Method based on Negotiable Evolutionary Algorithm
Hao Wen Lin, Li Zhang, Xinchang Hao, Tomohiro Murata

SB08 (ICGEC-2012-IS05)

Hybrid Evolutionary Algorithms in Forecasting Models

Chaired by Wei-Chiang Hong,

SB08-01 (ICGEC-2012-IS05-01)

Seasonal Support Vector Regression with Chaotic Genetic Algorithm in Electric Load Forecasting
Wei-Chiang Hong, Yucheng Dong, Li-Yueh Chen, Shih-Yung Wei

SB08-02 (ICGEC-2012-0081)

Stochastic Global Optimization Method for Solving Constrained Engineering Design Optimization Problems
Jui-Yu Wu

SB08-03 (ICGEC-2012-0118)

Pure and Hybrid Optimizers Applicable to Large-Scale Design Problem
Kazuhisa Chiba

SB08-04 (ICGEC-2012-0265)

Analysis of Evolution Mechanism for Multi-Agent Optimization Method
Koichiro Nakatsu, Hitoshi Furuta, Kyosuke Takahashi, Ken Ishibashi, Masahiro Uchida

SB08-05 (ICGEC-2012-0273)

Examining the Performance of Evolutionary Many-Objective Optimization Algorithms on a Real-World Application

Kaname Narukawa, Tobias Rodemann

SB08-06 (ICGEC-2012-0293)

Stock Index Forecasting for Vietnam's Stock Market

JuiFang Chang, Son Van Duong

SC09 (ICGEC-2012-IS03-II)

Advances in Information Security (II)

Chaired by Ya-Fen Chang, Jen-Ho Yang,

SC09-01 (ICGEC-2012-IS03-07)

A Security Flaw of a Bilinear-pairing-based Electronic Cash Scheme with Trustee-based Anonymity Revocation

Yuan-Fu Li, Ya-Fen Chang

SC09-02 (ICGEC-2012-IS03-08)

The Case Study of Adaptive Network-based Fuzzy Inference System Modeling for TAIEX Prediction

Min-Hsuan Fan, Hui-Feng Huang, Mu-Yen Chen, Tai-Ying Huang

SC09-03 (ICGEC-2012-IS03-09)

An Improvement to Lee and Hwang's Scheme

Shao-Fan Tseng, Chao-Wen Chan

SC09-04 (ICGEC-2012-IS03-10)

Analysis to Wen and Li's Scheme

Chun-Hong Lin, Chao-Wen Chan

SC09-05 (ICGEC-2012-0055)

A Memetic Algorithm with Random Key Crossover and Modified Neighborhood Search for the Solution of Capacitated Arc Routing Problems

Min Liu, Tapabrata Ray

SC09-06 (ICGEC-2012-0202)

Mutation in Compressed Encoding in Estimation of Distribution Algorithm

Orawan Watchanupaporn, Worasit Suwannik, Prabhas Chongstitva

MA01 (ICGEC-2012-IS13)

Ubiquitous Biomedical Systems and Applications

Chaired by Chin-Hsien Wu, Zeng-Wei Hong, Yen-Lin Chen,

MA01-01 (ICGEC-2012-IS13-01)

A Smartphone-based Chinese DAISY Digital Talking Book Player for Visually Impaired

Yuan-Hsiang Lin, Yuan-Chang Hsu, Yuan-Ya Kao

MA01-02 (ICGEC-2012-IS13-02)

An Energy Efficient Binarization Algorithm Based on 2-D Intelligent Block Detection for Complex Texture and Gradient Color Images

Chia-Shaud Hong, Yen-Hsiang Chen, Shanq-Jang Ruan

MA01-03 (ICGEC-2012-IS13-04)

Ability of Density Feature in Low-Dose Computed Tomography for Evaluating Screened Lung Tumor

Wei-Chih Shen, Yang-Hao Yu, Shwn-Huey Shieh, Guan-Chin Tseng, Wu-Huei Hsu, Chih-Yi Chen

MA01-04 (ICGEC-2012-0179)

Gene Expression Programming- Fuzzy Logic Method For Crop Type Classification

S. N. Omkar, Nikhil Ramaswamy, J. Senthilnath, Bharath S., Anuradha N. S.

MA01-05 (ICGEC-2012-0235)

Application of Sensitivity Analysis for an Improved Representation in Evolutionary Design Optimization

Lars Graening, Stefan Menzel, Thomas Ramsay, Bernhard Sendhoff

MA01-06 (ICGEC-2012-0284)

Multiple feature selectoin for pattern recognition using ID3 ensemble system

Koichiro Nakatsu, Hitoshi Furuta, Kyousuke Takahashi, Ken Ishibashi, Shigeki Yasuda

MA01-07 (ICGEC-2012-0259)

A PSO-based Algorithm with Subswarm Using Entropy and Uniformity for Image Segmentation

Jzau-Sheng Lin, Shou-Hung Wu

MB02 (ICGEC-2012-IS08)

Innovative Mobile Services

Chaired by Chien-Chang Hsu, Hsing Mei,

MB02-01 (ICGEC-2012-IS08-01)

Design of an Augmented Reality Application Framework to Mobile Device

Yong-Yi FanJiang, Shih-Chieh Lin, Yu-Zuo Lin

MB02-02 (ICGEC-2012-IS08-02)

A Model-Based Testing Tool for Embedded Software

Chien-Hung Liu, Shu-Ling Chen, Tien-Chi Huang

MB02-03 (ICGEC-2012-IS08-03)

A Cloud Service Design for Quality Evaluation of Design Patterns

Nien-Lin Hsueh, Ju-Yun Wang, Der-Hong Ting

MB02-04 (ICGEC-2012-IS08-04)

The Study of Plagiarism Detection for Object-oriented Programming

Jong Yih Kuo, Fu Chu Huang, Chien-Hung Liu, Hong Zhan Yang

MB02-05 (ICGEC-2012-IS08-05)

Applying Software Effort Estimation Model based on Work Breakdown Structure

Wen-Tin Lee, Kuo-Hsun Hsu, Jonathan Lee, Jong Yih Kuo

MB02-06 (ICGEC-2012-IS08-06)

An Intelligent Data Fusion Algorithm with Fusion Benefit Pattern Tree for Wireless Sensor Networks

Chien-Chang Hsu, Wei-Yi Wang

MC03 (ICGEC-2012-IS21)

High Speed Computation and Applications in Information Security Systems

Chaired by Jim-Min Lin,

MC03-01 (ICGEC-2012-IS21-01)

Self-Checking Gaussian Normal Basis Multiplier over GF(2^m) Using Multiplexer Approach

Che Wun Chiou, Jim-Min Lin, Hung Wei Chang, Wen-Yew Liang, Jenq-Haur Wang, Yun-Chi Yeh

MC03-02 (ICGEC-2012-IS21-02)

Super Digit-serial Systolic Multiplier over GF(2^m)

Chiou-Yng Lee

MC03-03 (ICGEC-2012-IS21-03)

Development and Validation on Integrated Dynamic Security Monitoring Platform

Ming-Zhi Wu, Wei-Tsong Lee, Ren-Ji Liao, George Chang

MC03-04 (ICGEC-2012-IS21-04)

SSTreasury+: A Secure and Elastic Cloud Data Encryption System

Kuan-Ying Huang, Guo-Heng Luo, Shyan-Ming Yuan

MC03-05 (ICGEC-2012-IS21-05)

A P2P Auto-Recover Method for the Factory Data of Cable Modem over the HFC Network

Yu-Liang Chen, Guo-Heng Luo, Yi-Ming Chang, Shyan-Ming Yuan

MA04 (ICGEC-2012-IS04-I)
Innovation in Computer Networking (I)
Chaired by Yuh-Chung Lin, Chen-Da Tsai,

MA04-01 (ICGEC-2012-IS04-01)
On Decoding of Binary Cyclic Codes up to Error-Correcting Capacity Five
Tsung-Ching Lin, Pei-Yu Shih, Wen-Ku Su, Trieu-Kien Truong

MA04-02 (ICGEC-2012-IS04-02)
Semantic Clustering-Based Community Detection in an Evolving Social Network
Hsun-Hui Huang, Horng-Chang Yang

MA04-03 (ICGEC-2012-IS04-03)
The Relevant Research of Mobile Learning Mode and Information Ability Indicator in Countrified Area
Tzong-Song Wang

MA04-04 (ICGEC-2012-IS04-04)
Design of Document Access Control Mechanism on Cloud Services
Chun-Wei Tseng, Feng-Jung Liu, Shih-Hao Huang

MA04-05 (ICGEC-2012-IS04-05)
An Efficient Packet Forwarding Mechanism Based on Bandwidth Prediction with Consideration of V2I and V2V Communications
Wei Kuang Lai, Mei-Tso Lin, Yuh-Chung Lin, Ya-Lin Jhuang

MA04-06 (ICGEC-2012-IS04-06)
An Novel Scheduling Algorithm for Video Stream in LTE
Yuh-Chung Lin, Wei Kuang Lai, Kai-Ting Yang, Mei-Tso Lin

MB05 (ICGEC-2012-IS07-I)
Intelligent Computing and Its Applications in Multimedia (I)
Chaired by Chia-Chen Lin,

MB05-01 (ICGEC-2012-IS07-01)
An Efficient Fragile Watermarking Scheme for Pixel-wise Tamper Detection
Yang-Kuo Lee, Jen-Chun Chang, Hsin-Lung Wu, Rong-Jaye Chen

MB05-02 (ICGEC-2012-IS07-03)
A Reversible Data Hiding Scheme Using Cartesian Product for HTML File
Yung-Chen Chou, Chun-Yi Huang, Hsin-Chi Liao

MB05-03 (ICGEC-2012-IS07-04)
A Reversible Data Hiding Scheme for Block Truncation Compressions based on Histogram Modification
Chia-Chen Lin, Xiao-Long Liu

MB05-04 (ICGEC-2012-IS07-06)
F-Selector Based on Statistical and Computational Methods in Candidate Oncogenes Selection for Ovarian Carcinoma Microarray Data
Wei-Chun Chen, Yung-Kuan Chan, Yu-An Liu, Ying-Chief Lin, Meng-Hsiun Tsai, I-Lin Ho

MB05-05 (ICGEC-2012-IS07-07)
A Cloud-user Access Control Mechanism based on Data Masking
Ting-Kuang Wu, Yung-Wang Lin, Iuon-Chang Lin

MC06 (ICGEC-2012-IS12)
Evolutionary and Intelligent Computing in Social Networks
Chaired by Guiran Chang,

MC06-01 (ICGEC-2012-IS12-01)
Generalized Structural Holes Finding Algorithm by Bisection in Social Communities

Ende Zhang, Guoren Wang, Kening Gao, Xiangguo Zhao, Yu Zhang

MC06-02 (ICGEC-2012-IS12-02)

A Four-Party Password-based Authentication Key Exchange Protocol

Xiumei Liu, Junjiang Liu, Guiran Chang

MC06-03 (ICGEC-2012-IS12-03)

Scalable Influence Maximization in Social Networks using the Community Discovery Algorithm

Jinshuang Li, Yangyang Yu

MC06-04 (ICGEC-2012-IS12-04)

A Lightweight Group-Key Management Protocol for Ad Hoc Networks

Changsheng Miao, Fengling Cao, Dong Chen, Guiran Chang

MC06-05 (ICGEC-2012-0321)

MASP - A Multi-Attribute Secretary Problem Approach to Multi-Objective Optimization with Fair Decision Maker

Mario Koppen, Rodrigo Verschae, Masato Tsuru

MC06-06 (ICGEC-2012-0328)

A Novel Diversity Induction Method for Bacterial Memetic Algorithm by Hibernation of Individuals

Janos Botzheim

MC06-07 (ICGEC-2012-0338)

PSO and APSO Evolutionary Computing In Indoor Wireless Communication

Chien-Hung Chen, Min-Hui Ho, Chien-Ching Chiu, Shu-Han Liao

MA07 (ICGEC-2012-IS04-II)

Innovation in Computer Networking (II)

Chaired by Shih-Pang Tseng, Yuh-Chung Lin,

MA07-01 (ICGEC-2012-IS04-07)

Cooperative Transmission Scheme in Metropolitan environment

Kai-Ting Yang, Wei Kuang Lai, Chen-Da Tsai, Chuan-Wang Chang

MA07-02 (ICGEC-2012-IS04-08)

Improving Harmony Search by Zipf Distribution

Shih-Pang Tseng, Wu-Wen Lin

MA07-03 (ICGEC-2012-0042)

Access Point Design with a Genetic Algorithm

Marco Antônio da Silva Barbosa, Maury Meirelles Gouvêa Júnior

MA07-04 (ICGEC-2012-0281)

A Hybrid Congestion Control for TCP over High Speed Networks

Yi-Cheng Chan, Hon-Jie Lee

MA07-05 (ICGEC-2012-0349)

A Dynamic Routing Scheme to Support Reliable TCP Connections on Wireless Mesh Networks

Mong-Fong Horng, Bo-Chao Chang, Pei-Yin Chen, Chin-Shiuh Shieh, Bin-Yih Liao

MA07-06 (ICGEC-2012-IS10-05)

A Fast Algorithm of the Discrete Cosine Transform for the Fermat Prime-length

Tsung-Ching Lin, Wen-Ku Su, Pei-Yu Shih, Trieu-Kien Truong

MB08 (ICGEC-2012-IS07-II)

Intelligent Computing and Its Applications in Multimedia (II)

Chaired by Chia-Chen Lin,

MB08-01 (ICGEC-2012-IS07-08)

A High Capacity Reversible Data Hiding Scheme Based on SMVQ
Chia-Chen Lin, Xue-Bai Zhang

MB08-02 (ICGEC-2012-0045)
A System Architecture of Widget-based Digital TV Interactive Platform
Kefeng Fan, Shijun Tang, Yun Liu, Subing Zhang, Yong Wang, Zhuoyan Xu

MB08-03 (ICGEC-2012-0092)
Dominant Points based Hand Finger Counting for Recognition under Skin Color Extraction in Hand Gesture Control System
ZhenYu Meng, Jeng-Shyang Pan, Kuo-Kun Tseng, WeiMin Zheng

MB08-04 (ICGEC-2012-0129)
Vision-Based human following and obstacle avoidance for an autonomous robot in intersections
Jau-Woei Perng, Cheng-Kang Chuang

MB08-05 (ICGEC-2012-0351)
Directional Discriminant Analysis for Image Feature Extraction
Dong Zou, Li-Yan Zhao

MC09 (ICGEC-2012-IS18)
Intelligent Applications for Home and Medical Treatment
Chaired by Nai-Bin Hsu, Jen-Chu Liu,

MC09-01 (ICGEC-2012-IS18-01)
An Intelligent Hand Gesture Extraction and Recognition System for Home Care Application
Wen-Pinn Fang

MC09-02 (ICGEC-2012-IS18-02)
An Efficient Data Gathering System for Home Medical Treatment
Jen-Chu Liu, Kuo-Yu Chuang, Yi-Lun Wen

MC09-03 (ICGEC-2012-IS18-03)
Verifiable Visual Cryptography
Shuo-Fang Hsu, Yu-Jie Chang, Ran-Zan Wang, Yeuan-kuen Lee, Shih-Yu Huang

MC09-04 (ICGEC-2012-IS18-04)
Image Hiding by LSB Matching of Higher Payload
Shang-Kuan Chen, Ja-Chen Lin

MC09-05 (ICGEC-2012-0125)
Improving Expert Knowledge in Dynamic Process Monitoring by Symbolic Regression
Ingo Schwab, Melanie Senn, Norbert Link

MC09-06 (ICGEC-2012-0163)
Medical Image Diagnosis of Liver Cancer by Revised GMDH-type Neural Network using Feedback Loop Calculation
Tadashi Kondo, Junji Ueno, Schoichiro Takao

TA01 (ICGEC-2012-IS10)
Multimedia Innovative Computing
Chaired by Wu-Chih Hu, Deng-Yuan Huang,

TA01-01 (ICGEC-2012-IS10-01)
Novel Detection of Image Forgery for Exchanged Foreground and Background Using Image Watermarking Based on Alpha Matte
Wu-Chih Hu, Wei-Hao Chen, Deng-Yuan Huang, Ching-Yu Yang

TA01-02 (ICGEC-2012-IS10-02)
Application of Support Vector Machine for Emotion Classification

Chuan-Yu Chang, Chuan-Wang Chang, Yu-Meng Lin

TA01-03 (ICGEC-2012-IS10-03)

Path Planning Based on Bezier Curve for Robot Swarms

Chien-Chou Lin, Wei-Ju Chuang, Yan-Deng Liao

TA01-04 (ICGEC-2012-IS10-04)

Reducing the Cost of Regression Testing by Identifying Irreplaceable Test Cases

Chu-Ti Lin, Kai-Wei Tang, Cheng-Ding Chen, Gregory M. Kapfhammer

TA01-05 (ICGEC-2012-WS01-07)

A Study of Taiwan Political Elections and Stock Market Dynamism

Deng-Yiv Chiu, Ming-Hsiung Ying, Ping-Chung Yu

TB02 (ICGEC-2012-IS14)

Intelligent Video Processing

Chaired by Chao-Ho Chen, Chien-Chuan Ko,

TB02-01 (ICGEC-2012-IS14-01)

Image Restoration for Linear Local Motion-Blur Based on Cepstrum

Chao-Ho Chen, Zhang Rui, Kuo-Kun Tseng, Jeng-Shyang Pan

TB02-02 (ICGEC-2012-IS14-02)

An Efficient Hole-Filling Approach Using Adaptive Rendering

Chao-Ho Chen, Chun-Yi Sung, Tsong-Yi Chen, Bo-Ting Guo, Chin-Hsing Chen

TB02-03 (ICGEC-2012-IS14-03)

Semi-automatic Depth Map Extraction Method for Stereo Video Conversion

Tsung-Han Tsai, Chen-Shuo Fan, Chih-Chi Huang

B02-04 (ICGEC-2012-IS14-04)

An Improved Method of Constructing a Data Aggregation Tree in Wireless Sensor Networks

Bing-Hong Liu, Ying-hong Jhuang, Li-Ping Tung, Jyun-Yu Jhang

TB02-05 (ICGEC-2012-IS14-05)

An Efficient Image Dehazing Method

Chih-Yuan Lien, Fu-Jhong Yang, Chien-Chuan Huang

TB02-06 (ICGEC-2012-IS14-06)

High Dynamic Range Image Rendering With Order-Statistics Filter

Yeu-Horng Shiau, Hung-Yu Yang, Pei-Yin Chen, Chien-Chuan Huang

TB02-07 (ICGEC-2012-IS14-07)

A Low-Complexity Scaling Scheme for Barrel Distortion Correction

Chien-Chuan Huang, Pei-Yin Chen, Chih-Yuan Lien, Hung-Yu Yang

TC03 (ICGEC-2012-IS15)

Security Techniques and Applications

Chaired by Mu-Liang Wang, Yi-Jen Su,

TC03-01 (ICGEC-2012-IS15-01)

Optical Verification System Based on a Correlator Using Image Manipulations as Locks

Hsuan-T. Chang, Chien-Yi Lu, Mn-Ta Lee, Mu-Liang Wang

TC03-02 (ICGEC-2012-IS15-02)

Robust Audio Watermarking Based on MDCT Coefficients

Mu-Liang Wang, Hong-Xun Lin, Mn-Ta Lee

TC03-03 (ICGEC-2012-IS15-03)

A Moving Object Detection Algorithm for Vehicle Localization

Chieh-Ling Huang, Heng-Ning Ma

TC03-04 (ICGEC-2012-IS15-04)

Using Incremental Addition to Evaluate the Grouping Quality of Document Classification

Yi-Jen Su, Chuan-Wang Chang, Jian-Cheng Wun, Wei-Lin Hsu, Yue-Qun Chen

TC03-05 (ICGEC-2012-0154)

Card Fraud Detection by Inductive Learning and Evolutionary Algorithm

Liang Lei

TC03-06 (ICGEC-2012-0345)

Exploring Learning Effectiveness through Windows Live Social Network for Elementary School

Yuh-Ming Cheng

TC03-07 (ICGEC-2012-WS01-11)

A Double Blocking Dynamic Framed Slotted ALOHA Anti-Collision Method for Mobile RFID Systems

Chi-Chung Lee, Sheng-Yue Lin

TA04 (ICGEC-2012-IS16)

Integrated Systems Engineering

Chaired by Jiann-Gwo Doong,

TA04-01 (ICGEC-2012-IS16-02)

Exploring Humanity-Oriented Content Producing Process in Providing Valuable e-Learning Applications

Jiann-Gwo Doong

TA04-02 (ICGEC-2012-0147)

A Hierarchical Approach for Clustering and Pattern Matching of Gene Expression Data

Soriful Hoque, Salim Istyaq, Md. Mushir Riaz

TA04-03 (ICGEC-2012-0150)

Packing unequal disks in a circular container using a population based algorithm

Wenqi Huang, Zhizhong Zeng, Ruchu Xu, Zhanghua Fu

TA04-04 (ICGEC-2012-0268)

Design and Simulation of a Ku-Band MMIC Power Amplifier

Chen Li, Zheng-Liang Huang, Wei Chen, Yong-Heng Shang, Fa-Xin Yu

TA04-05 (ICGEC-2012-0287)

Position Correction on Consumer-Grade GPS Using Genetic Programming

Jung Yi Lin, Ming Chih Tung, Chia Hui Chang, Chao Chung Liu, Ju Fu Peng

TA04-06 (ICGEC-2012-0299)

Design of Fuzzy Quality Control Charts for Attributes Based on Triangular Fuzzy Numbers

Tien-Tsai Huang, Liang-Ho Chen, Yen-Wen Wang, Yi-Syuan Su

TB05 (ICGEC-2012-IS17)

Innovative Computing and Its Applications

Chaired by Huey-Ming Lee, Lily Lin, Jin-Shieh Su

TB05-01 (ICGEC-2012-0014)

Two-Stage Multi-Objective Unit Commitment Optimization under Future Load

Bo Wang, You Li, Junzo Watada

TB05-02 (ICGEC-2012-0033)

A Fuzzy Support Vector Machine With Qualitative Regression Preset

Wei Yicheng, Junzo Watada, Pedrycz Witold

TB05-03 (ICGEC-2012-0049)

An Expandable Genetic Cell System for Solving Global Optimization Problem on Continuous Multimodal

Functions

Ting-Hua Chang

TB05-04 (ICGEC-2012-0074)

Comparative Study on Fitness Landscape Approximation with Fourier Transform

Yan Pei, Hideyuki Takagi

TCP01 (ICGEC-2012-PS01)

Poster Session

TCP01-01 (ICGEC-2012-0077)

Modified 2-D Cepstrum using Soft-Computing

Himanshu Chaurasiya

TCP01-02 (ICGEC-2012-0208)

Application of Social Harmony Search Algorithm on Composite Web Service Selection based on Quality Attributes

Pegah Majlesi Esfahani, Jafar Habibi, Touraj Varacee

TCP01-03 (ICGEC-2012-0309)

Classification of Leukemia Gene Expression Data Using Particle Swarm Optimization

Yajie Liu, Xinling Shi, Zhenzhou An

TCP01-04 (ICGEC-2012-0314)

A New Approach for Solving Linear Bilevel Programming using Differential Evolution

Kejia Pan, Yan Yang, Jianli Liu

TCP01-05 (ICGEC-2012-0190)

A Peer-Peer Particle Swarm Optimizer

Hrishikesh Dewan, V Susheela Devi

TCP01-06 (ICGEC-2012-0160)

Feature Weighting for Clustering by Particle Swarm Optimization

Swetha phuleker, Susheela Devi V

-Venue

The Kitakyushu International Conference Center is located at the core of the International Convention Zone north of JR Kokura Station. The main hall seats 585 people and is equipped with a large front-projection screen and three 200-inch, high-definition screens for effective presentations using videos, computer images, etc. Its simultaneous interpreting system can handle four different languages at one time. The event hall, which is adjacent to the main hall, has a 12 meter-high ceiling and can be used as an exhibition space or for parties and receptions.

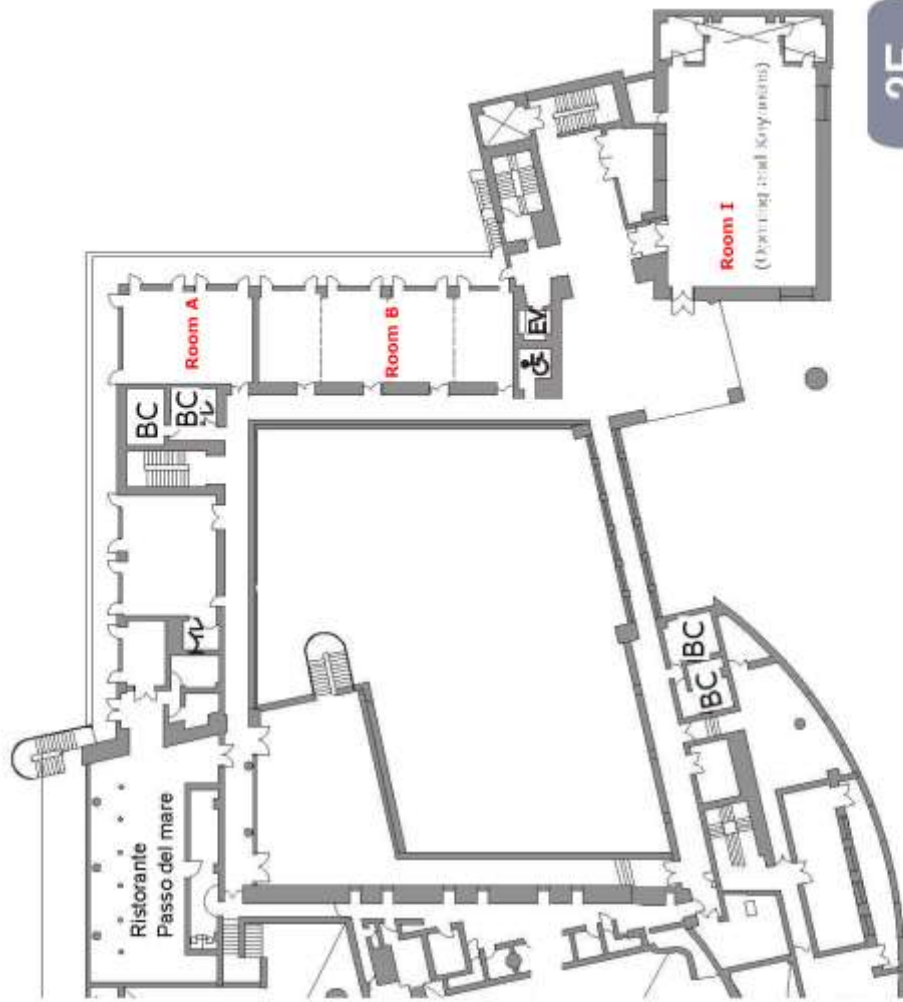
The international conference room is also equipped with a 4-language simultaneous interpreting system and high-grade equipment suitable for international events such as a 110-inch hi-vision projector and a 90-inch video projector. In addition, the Center has six small to medium conference rooms that range in size from 36 to 108 seats. These can be connected to the main hall and the international conference room by an audiovisual and LAN system for large-scale academic society meetings, etc.



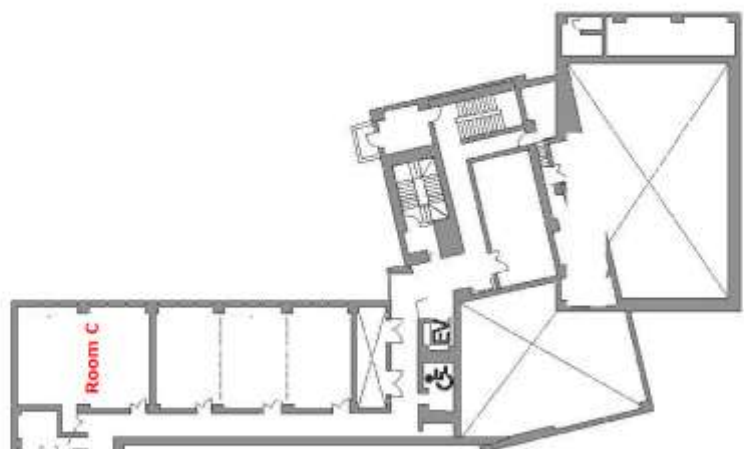
Conference Rooms: 21, 22, 31



International Conference Room



2F



3F

Author Inded

A	An, Zhenzhou	TCP01-03		Chen, Yen-Hsiang	MA01-02	
	Anuradha, N. S.	MA01-04		Chen, Yen-Lin	MA01	
B	Balas, Vlentina	Keynote 1		Chen, Yi-Dung	SA04-03	
	Bharath, S.	MA01-04		Chen, Yi-Hui	SA01-06	
	Botzheim, Janos	MC06-06		Chen, You-Shyang	SB05-07	
	Bu, Shupo	SB05-02	SB05-01	Chen, Yueh-Hong	SB02-04	
				Chen, Yue-Qun	TC03-04	
C	Cao, Fengling	MC06-04		Chen, Yu-Liang	MC03-05	
	Chao, Han-Chieh	Keynote 2		Cheng, Ching-Hsue	SB05-07	
	Chan, Chao-Wen	SC09-03	SC09-04	Cheng, Hsiu-Hua	SA07-04	
	Chan, Chi-Shiang	A01	SA01-06	Cheng, Kuo-Sheng	SC03-01	
	Chan, Yi-Cheng	MA07-04		Cheng, Yuh-Ming	TC03-06	
	Chan, Yung-Kuan	MB05-04		Chiang, Chin-Yuan	SB02-02	
	Chang, Bo-Chao	MA07-05		Chiba, Kazuhisa	SB08-03	
	Chang, Chia Hui	TA04-05		Chiou, Che Wun	MC03-01	
	Chang, Chia-Chi	SA04-01		Chiu, Chien-Ching	MC06-07	
	Chang, Chin-Chen	SC06-05		Chiu, Deng-Yiv	TA01-05	
	Chang, Chuan-Wang	TA01-02	TC03-04	Chiu, Yu-Ying	SC06-02	
		MA07-01		Chongstiva, Prabhas	SC09-06	
	Chang, Chuan-Yu	TA01-02		Chou, Yung-Chen	MB05-02	SC06-07
	Chang, George	MC03-03		Chuang, Cheng-Hung	SA01-01	SA01-05
	Chang, Guiran	MC06	MC06-02	Chuang, Cheng-Kang	MB08-04	
		MC06-04		Chuang, Kuo-Yu	MC09-02	
	Chang, Hsuan-T.	TC03-01		Chuang, Wei-Ju	TA01-03	
	Chang, Hung Wei	MC03-01		Chung, Che-Lun	SC06-01	
	Chang, Jen-Chun	MB05-01		D	da Silva Barbosa, Marco Antonio	MA07-03
					Deng, Guang-Hong	SA07-05
	Chang, JuiFang	SB08-06			Devi, V Susheela	TCP01-05
	Chang, Kai-Jie	SC06-05			Dewan, Hrishikesh	TCP01-05
	Chang, Pei-Yu	SC06-04			Dong, Yucheng	SB08-01
	Chang, Shih-Fang	SA04-05		E	Doong, Jiann-Gwo	TA04
	Chang, Shun-Hsyung	SC03-06			Duong, Son Van	SB08-06
	Chang, Ting-Hua	TB05-03				
	Chang, Wen-Chih	SA04	SA07			
	Chang, Ya-Fen	SC06	SC09		Esfahani, Pegah Majlesi	TCP01-02
		SC06-04	SC09-01	F	Fan, Chen-Shuo	TB02-03
	Chang, Yi-Ming	MC03-05			Fan, Kefeng	MB08-02
	Chang, Yu-Jie	MC09-03				SB05-01
	Chaurasiya, Himanshu	TCP01-01			Fan, Min-Hsuan	SC09-02
	Chen, Chao-Ho	TB02	TB02-01		Fang, Wen-Pinn	MC09-01
		TB02-02			FanJiang, Yong-Yi	MB02-01
	Chen, Cheng-Ding	TA01-04		G	Fu, Zhanghua	TA04-03
	Chen, Chien-Hung	MC06-07			Furuta, Hitoshi	MA01-06
	Chen, Chien-Jung	SB02-01				SB08-04
	Chen, Chih-Yi	MA01-03				
	Chen, Ching-Jiang	SC03-02			Gao, Kening	MC06-01
	Chen, Chin-Hsing	TB02-02		H	Gouvea Junior, Maury Meirelles	MA07-03
					Graening, Lars	MA01-05
	Chen, Da-Ren	SB05-07			Guo, Bo-Ting	TB02-02
	Chen, Dong	MC06-04				
	Chen, Liang-Ho	TA04-06			Habibi, Jafar	TCP01-02
	Chen, Li-Wen	SB02-05			Hao, Xinchang	SA07-06
	Chen, Li-Yueh	SB08-01			Ho, I-Lin	MB05-04
	Chen, Mu-Yen	SC09-02			Ho, Min-Hui	MC06-07
	Chen, Pei-Yin	TB02-07	MA07-05		Hong, Chia-Shaud	MA01-02
		TB02-06			Hong, Wei-Chiang	SB08
	Chen, Ping-Wei	SB02-03			Hong, Zeng-Wei	MA01
	Chen, Qingli	SB05-03			Hoque, Soriful	TA04-02
	Chen, Rong-Jaye	MB05-01			Horng, Mong-Fong	MA07-05
	Chen, Shang-Kuan	MC09-04			Hsieh, Wei-Fan	SA01-04
	Chen, Shu-Ling	MB02-02			Hsu, Chien-Chang	MB02
	Chen, Ssu-Wei	SC03-03			Hsu, Chih-Hsueh	SA01-05
	Chen, Szi-Wen	SC03-05			Hsu, Kuo-Hsun	MB02-05
	Chen, Tsong-Yi	TB02-02			Hsu, Nai-Bin	MC09
	Chen, Wei	TA04-04			Hsu, Shuo-Fang	MC09-03
	Chen, Wei-Chun	MB05-04			Hsu, Wei-Lin	TC03-04
	Chen, Wei-Hao	TA01-01			Hsu, Wu-Huei	MA01-03
	Chen, Wei-Yu	SB05-07				

	Hsu, Yuan-Chang	MA01-01		Lei, Jianjun	SB05-01	SB05-02
	Hsu, Yu-Wei	SC06-01		Lei, Liang	TC03-05	
	Hsueh, Nien-Lin	MB02-03		Li, Chen	TA04-04	
	Hu, Guanglong	SB05-01	SB05-02	Li, Chih-Yang	A01	
	Hu, Wu-Chih	TA01	TA01-01	Li, Jinshuang	MC06-03	
	Huang, Chiao-Chih	SA01-06		Li, You	TB05-01	
	Huang, Chieh-Ling	TC03-03		Li, Yuan-Fu	SC09-01	
	Huang, Chien-Chuan	TB02-07	TB02-05	Liang, Wen-Yew	MC03-01	
		TB02-06		Liao, Bin-Yih	MA07-05	
	Huang, Chih-Chi	TB02-03		Liao, Hsin-Chi	MB05-02	
	Huang, Chun-Yi	MB05-02		Liao, Ren-Ji	MC03-03	
	Huang, Deng-Yuan	TA01	TA01-01	Liao, Shu-Han	MC06-07	
	Huang, Fu Chu	MB02-04		Liao, Yan-Deng	TA01-03	
	Huang, Hsiang-Cheh	SB02-04		Lien, Chih-Yuan	TB02-05	TB02-07
	Huang, Hsun-Hui	MA04-02		Lin, Chia-Chen	MB05	MB08
	Huang, Hui-Feng	SC06-03	SC09-02		MB05-03	MB08-01
	Huang, Kuan-Ying	MC03-04		Lin, Chien-Chou	TA01-03	
	Huang, Shih-Hao	MA04-04		Lin, Chih-Yang	SA01-03	
	Huang, Shih-Yu	MC09-03		Lin, Chuen-Horng	SC06-02	
	Huang, Tai-Ying	SC09-02		Lin, Chun-Hong	SC09-04	
	Huang, Tien-Chi	MB02-02		Lin, Chu-Ti	TA01-04	
	Huang, Tien-Tsai	TA04-06		Lin, Hao Wen	SA07-06	SB05-06
	Huang, Wenqi	TA04-03		Lin, Hong-Xun	TC03-02	
	Huang, You-Dong	SB02-06		Lin, Iuon-Chang	MB05-05	
	Huang, Zheng-Liang	TA04-04		Lin, Ja-Chen	MC09-04	
				Lin, Jim-Min	MC03	MC03-01
I	Ishibashi, Ken	MA01-06	SB08-04	Lin, Ju-Chun	SA07-04	
\	Ishibuchi, Hisao	Keynote3		Lin, Jung Yi	TA04-05	
	Istyaq, Salim	TA04-02		Lin, Jzau-Sheng	MA01-07	
				Lin, Lily	TB05	
J	Jan, Jinn-Ke	SA04-07		Lin, Mei-Tso	MA04-05	MA04-06
	Jhan, Bo-Yan	SC06-02		Lin, Pei-Yu	SA01-04	
	Jhuang, Ya-Lin	MA04-05		Lin, Pin-Han	SC06-03	
				Lin, Sheng-Yue	TC03-07	
K	Kang, Li-Wei	SA01-03		Lin, Shiang-Lin	SA07-01	
	Kao, Li-Fang	SA04-02		Lin, Shih-Chieh	MB02-01	
	Kao, Yuan-Ya	MA01-01		Lin, Shih-Yao	SC03-03	SC03-05
	Kapfhammer, Gregory M.	TA01-04		Lin, Tsung-Ching	MA04-01	MA07-06
	Kawano, Tomonori	SB05-05		Lin, Wei-Chun	SC03	SC03-04
	Ke, Chih-Kun	SA04-05			SC03-06	
	Ko, Chien-Chuan	TB02		Lin, Wu-Wen	MA07-02	
	Ko, Chung-Hung	SB02-02		Lin, Ying-Chief	MB05-04	
	Ko, Yen-Fen	SC03-01		Lin, Yuan-Hsiang	MA01-01	
	Kondo, Tadashi	MC09-06		Lin, Yu-Ching	SC06-02	
	Koppen, Mario	MC06-05		Lin, Yuh-Chung	MA04	MA04-06
	Ku, David Tawei	SA04-01			MA07	MA04-05
	Kuo, Chung-Ming	SC03-02		Lin, Yu-Meng	TA01-02	
	Kuo, Jong Yih	MB02-04	MB02-05	Lin, Yung-Wang	MB05-05	
				Lin, Yu-Zuo	MB02-01	
L	Lai, Chih-Chin	SB02-02		Lin, Zheng-Hua	SA04-05	
	Lai, Wei Kuang	MA04-05	MA04-06	Link, Norbert	MC09-05	
		MA07-01		Liu, Chao Chung	TA04-05	
	Lan, Jen-Hong	SC03-03		Liu, Chien-Hung	MB02-02	MB02-04
	Le, Hau-Wei	SC06-02		Liu, Chi-Lun	SC06-06	
	Lee, Chi-Chung	TC03-07		Liu, Duen-Ren	SA07-03	
	Lee, Chiou-Yng	MC03-02		Liu, Feng-Jung	MA04-04	
	Lee, Hon-Jie	MA07-04		Liu, Jen-Chu	MC09-02	MC09
	Lee, Huey-Ming	TB05		Liu, Jianli	TCP01-04	
	Lee, Jonathan	MB02-05		Liu, Junjiang	MC06-02	
	Lee, Mn-Ta	TC03-01	TC03-02	Liu, Min	SC09-05	
	Lee, Tsair-Fwu	SC03	SC03-04	Liu, Wen-Kai	SA04-06	
		SC03-02	SC03-05	Liu, Xiao-Long	MB05-03	
		SC03-06	SC03-03	Liu, Xiumei	MC06-02	
	Lee, Wei-Tsong	MC03-03		Liu, Yajie	TCP01-03	
	Lee, Wen-Tin	MB02-05		Liu, Yu-An	MB05-04	
	Lee, Yang-Kuo	MB05-01		Liu, Yun	MB08-02	
	Lee, Yeuan-kuen	MC09-03		Lu, Chien-Yi	TC03-01	

	Lu, Chi-Heng	SC03-05		Tian, Weili	SB05-03	
	Lu, Li-Wei	SB02-05		Ting, Der-Hong	MB02-03	
	Luo, Chengzhi	SB05-01		Truong, Trieu-Kien	MA04-01	MA07-06
	Luo, Guo-Heng	MC03-04	MC03-05	Tsai, Chen-Da	MA04	MA07-01
M	Ma, Heng-Ning	TC03-03		Tsai, Chiung-Hui	SB02-06	
	Mei, Hsing	MB02		Tsai, Meng-Hsiun	MB05-04	
	Meng, ZhenYu	MB08-03		Tsai, Tsung-Han	TB02-03	
	Menzel, Stefan	MA01-05		Tsai, Yuan-Yu	SA01-06	
	Miao, Changsheng	MC06-04		Tseng, Chun-Wei	MA04-04	
	Murata, Tomohiro	SA07-06		Tseng, Guan-Chin	MA01-03	
N	Nakatsu, Koichiro	MA01-06	SB08-04	Tseng, Kuo-Kun	MB08-03	TB02-01
	Narukawa, Kaname	SB08-05		Tseng, Shao-Fan	SC09-03	
	Ng, Hui-Fuang	SA01-05		Tseng, Shih-Pang	MA07	MA07-02
O	Omar, Hani A.	SA07-03		Tsuru, Masato	MC06-05	
	Omkar, S. N.	MA01-04		Tuan, Chiu-Ching	SC03-05	
	Ouyang, Chen-Sen	SB02-03		Tung, Ming Chih	TA04-05	
P	Pan, Jeng-Shyang	MB08-03	SB05-06	Tung, Wei-Feng	SA04-06	
		TB02-01		U Uchida, Masahiro	SB08-04	
	Pan, Kejia	TCP01-04		Ueno, Junji	MC09-06	
	Pei, Yan	TB05-04		V Varacee, Touraj	TCP01-02	
	Peng, Ju Fu	TA04-05		Verschae, Rodrigo	MC06-05	
	Perng, Jau-Woei	MB08-04		W Wang, Bo	TB05-01	
R	Phuleker, Swetha	TCP01-06		Wang, Chen-Shu	SA04	SA07
	Prangjarote, Panyaporn	SA01-03			SA04-02	SA04-03
					SA07-01	
	Ramaswamy, Nikhil	MA01-04		Wang, Chih-Chao	SC06-07	
	Ramsay, Thomas	MA01-05		Wang, Guoren	MC06-01	
	Ray, Tapabrata	SC09-05		Wang, Hung-Yu	SC03-06	SC03
S	Riaz, d. Mushir	TA04-02			SC03-04	
	Rodemann, Tobias	SB08-05		Wang, Jenq-Haur	MC03-01	
	Ruan, Shanq-Jang	MA01-02		Wang, Jian	SB05	
	Rui, Zhang	TB02-01		Wang, Ju-Yun	MB02-03	
				Wang, Luke K.	SC03-03	
				Wang, Mu-Liang	TC03	TC03-02
S	Sakai, Setsuko	SB05-04			TC03-01	
	Schwab, Ingo	MC09-05		Wang, Ran-Zan	MC09-03	
	Sendhoff, Bernhard	MA01-05		Wang, Ting	SC03-01	
	Senn, Melanie	MC09-05		Wang, Tzong-Song	MA04-03	
	Senthilnath, J.	MA01-04		Wang, Wei-Yi	MB02-06	
	Shang, Yong-Heng	TA04-04		Wang, Yen-Wen	TA04-06	
S	Shen, Jau-Ji	SA04-07	SC06-07	Wang, Yong	MB08-02	
	Shen, Wei-Chih	MA01-03		Watada, Junzo	TB05-02	TB05-01
	Shi, Xinling	TCP01-03		Watchanupaporn, Orawan	SC09-06	
	Shi, Zhong-Yan	SA01-01		Wei, Shih-Yung	SB08-01	
	Shiau, Yeu-Horng	TB02-06		Wen, Yi-Lun	MC09-02	
S	Shieh, Chin-Shiuh	MA07-05		Witold, Pedrycz	TB05-02	
	Shieh, Shwn-Huey	MA01-03		Wu, Chih-Hung	SB02	SB02-01
	Shih, Pei-Yu	MA04-01	MA07-06		SB02-05	SB02-06
	Soto, Edward	SC03-06		Wu, Chin-Hsien	MA01	
	Su, Jin-Shieh	TB05		Wu, Haitong	SB05-06	
	Su, Wen-Ku	MA07-06	MA04-01	Wu, Hsin-Lung	MB05-01	
S	Su, Yi-Jen	TC03-04	TC03	Wu, Jia-Ming	SC03-02	
	Su, Yi-Syuan	TA04-06		Wu, Jui-Yu	SB08-02	
	Sung, Chun-Yi	TB02-02		Wu, Li-Fu	SC03-04	
	Susheela, Devi V.	TCP01-06		Wu, Mei-Yu	SA04-04	
	Suwannik, Worasait	SC09-06		Wu, Ming-Zhi	MC03-03	
				Wu, Shih-Jung	SA07-02	
T	Takagi, Hideyuki	TB05-04		Wu, Shou-Hung	MA01-07	
	Takahama, Tetsuyuki	SB05-04		Wu, Ting-Kuang	MB05-05	
	Takahashi, Kyosuke	SB08-04		Wu, Wen-Chuan	SA01-02	
	Takahashi, Kyousuke	MA01-06		Wu, Yu-Chieh	SA01-02	
	Takao, Schoichiro	MC09-06		Wun, Jian-Cheng	TC03-04	
	Tang, Kai-Wei	TA01-04				
	Tang, Shijun	MB08-02				

X	Xu, Ruchu	TA04-03	
	Xu, Zhuoyan	MB08-02	
Y	Yang, Ching-Yu	TA01-01	
	Yang, Chyuan-Huei Thomas	SC06-01	
	Yang, Cing-Wen	SC03-06	
	Yang, Fu-Jhong	TB02-05	
	Yang, Hong Zhan	MB02-04	
	Yang, Horng-Chang	MA04-02	
	Yang, Hung-Yu	TB02-06	TB02-07
	Yang, Jen-Ho	SC06	SC06-05
		SC09	
	Yang, Kai-Ting	MA07-01	SA07-05
		MA04-06	
	Yang, Lijun	SB05-03	
	Yang, Yan	TCP01-04	
	Yasuda, Shigeki	MA01-06	
	Yeh, Chia-Hung	SA01-03	
	Yeh, Chih-Hsiang	SB02-02	
	Yeh, Chun-Hsiu	SA04-07	
	Yeh, Shyh-An	SC03-02	
	Yeh, Wei-Chih	SB02-01	
	Yeh, Yun-Chi	MC03-01	
	Yicheng, Wei	TB05-02	
	Ying, Ming-Hsiung	SA07-05	TA01-05
	Yu, Fa-Xin	TA04-04	
	Yu, Ping-Chung	TA01-05	
	Yu, Yang-Hao	MA01-03	
	Yu, Yangyang	MC06-03	
	Yuan, Shyan-Ming	MC03-04	MC03-05
Z	Zeng, Zhizhong	TA04-03	
	Zhang, Ende	MC06-01	
	Zhang, Li	SA07-06	
	Zhang, Subing	MB08-02	
	Zhang, Xue-Bai	MB08-01	
	Zhang, Yu	MC06-01	
	Zhang, Zhiyong	SB05	SB05-03
	Zhao, Li-Yan	MB08-05	
	Zhao, Xiangguo	MC06-01	
	Zheng, Tao	SB05-06	
	Zheng, WeiMin	MB08-03	
	Zou, Dong	MB08-05	

One day tour on August 24, 2012

One day tour to Oomi islands and Nishinagato with hot spring bathing

Oomi islands are one of the most beautiful scenery in Japan.

ruising in islands and find various scenes on the sea.

After then we will move to Nishinagato. We stay there some hours, enjoy a delicious lunch and, if you like, taking a hot spring bath at Nishinagato Hotel. They provides various baths, a bath in outside, a bath in a room seeing a sea scenery

Then, we will be back running the sea-side of Japan Sea. It should be beautiful road.

Cost: 10,000JPY including transportation, cruising, lunch and bathing.

Deadline to reserve: August 10, 2012.

Application form : [Please down-load and send it to icgec12@bit.kuas.edu.tw](mailto:icgec12@bit.kuas.edu.tw)



Nishinagato Chairch



ICGEC2012

Invitation to Welcome Party

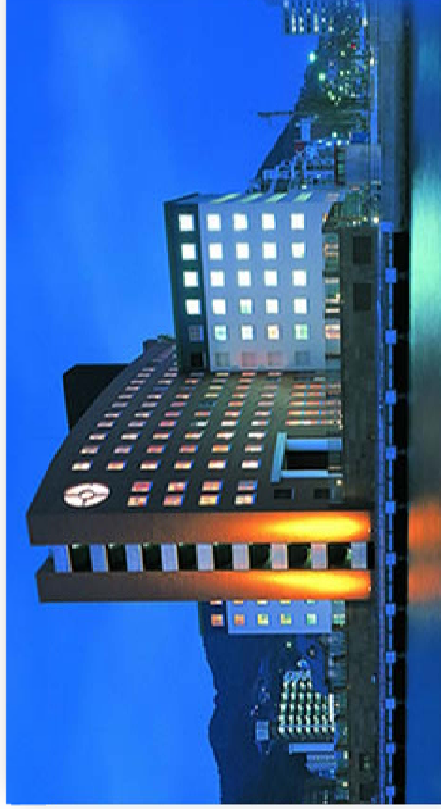
It is a pleasure for us to invite you to the Welcome Party of ICGEC2012 held from 19:00 to 21:00 on August 25, 2012 at Mojiko Hotel 2F. Please join us.

Place: 9-11 Minatomachi Moji-ku, Kitakyushu-shi, Fukuoka-ken,
Moving: At 18:00 departure at the exit of Conference Hall.

Take a train from Kokura to Mojiko and 5 minutes walk.

Attention : Or take a train for Mojiko (Moji Harbor). Get off at Mojiko (terminal). Then walk to Mojiko Hotel. It takes 5 minutes. (200m). Surrounding Mojiko is retrospective sightseeing spots.

Contact: Mobile phone 090-3464-4929 (Junzo Watada)



9-11 Minatomachi Moji-ku, Kitakyushu-shi, Fukuoka-ken,
Tel: 093-321-1111 (Moji-ko Hotel)

ICGEC2012

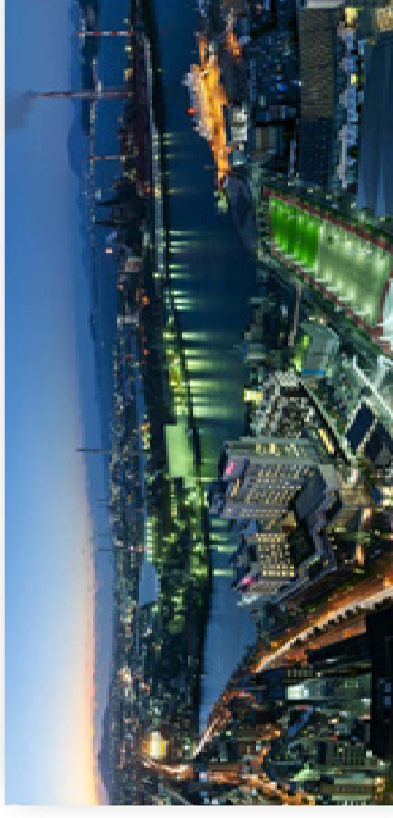
Invitation to Banquet Party

It is a pleasure for us to invite you to the Banquet party of ICGEC2012 held from 19:00 to 21:00 on August 27, 2012 at Rihga Top, Rihga Royal Hotel 29 F. Please join us.

Place: 2-14-2 Asano Kokurakita-ku, Kitakyushu-shi, Fukuoka-ken,
beside the JR Kokura Station.

It stands between JR Kokura Station and Convention Hall

Contact: Mobile phone 090-3464-4929 (Junzo Watada)



2-14-2 Asano Kokurakita-ku, Kitakyushu-shi, Fukuoka-ken,
Tel: 093-531-1121 (Rihga Royal Hotel)

